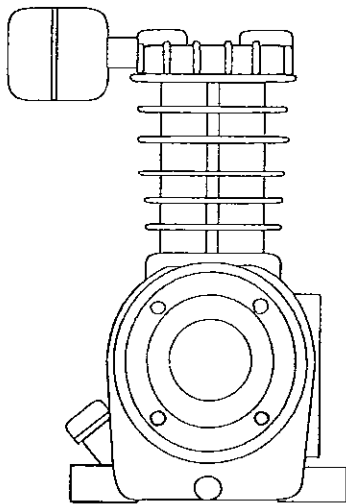




## 123 Series Compressor Pump



Plain Pump P.N. 123-4502  
Less flywheel & air filter

Complete Pump P.N. 123-523  
Comes with flywheel & air filter

**NOTE:** For installation and maintenance information refer to SB-30-001B

**SPECIFICATIONS:**

Crankcase Capacity - 18.5 fluid ounces or .55 litres

Minimum RPM - 350

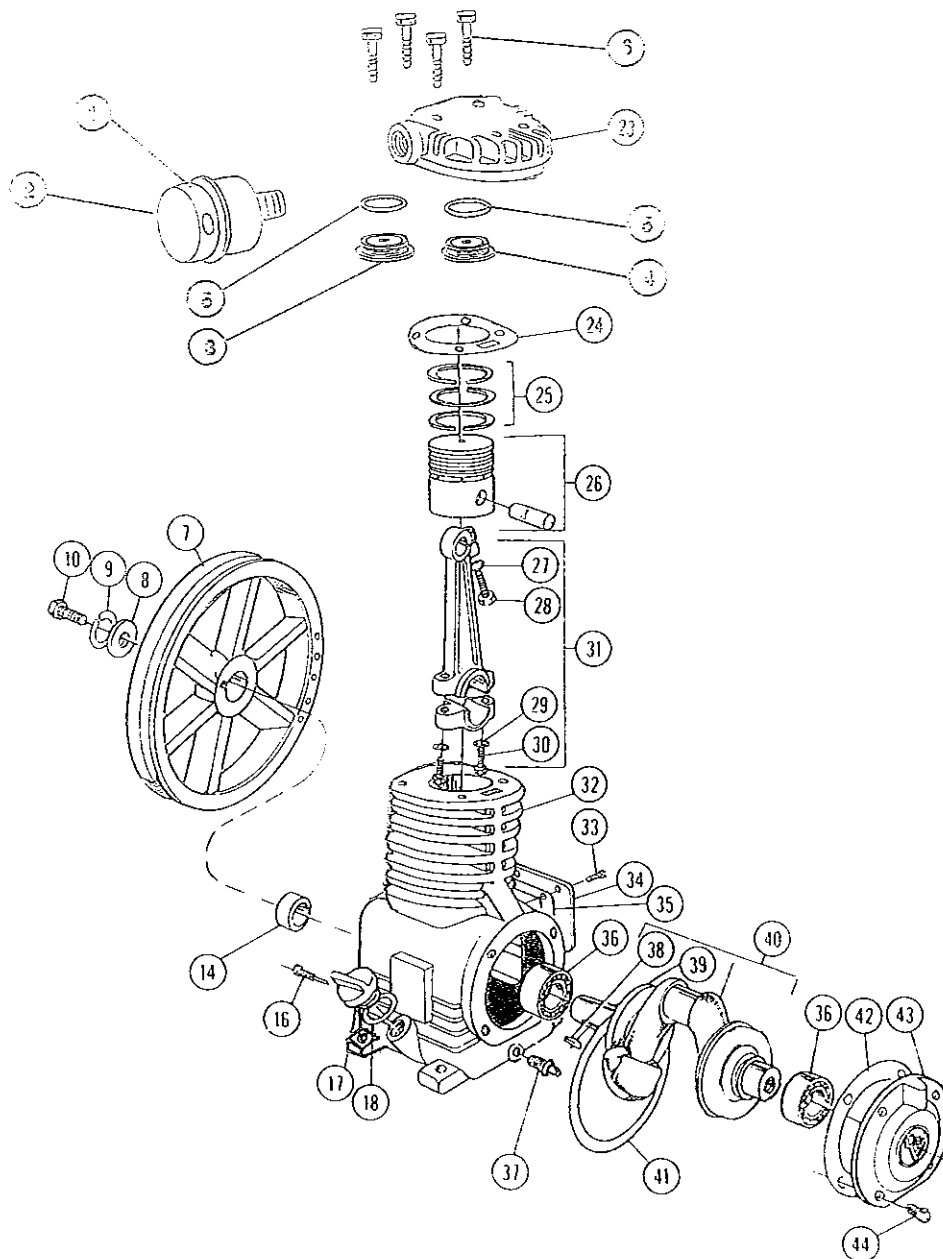
Maximum RPM - 950

Maximum continuous duty working pressure - 150 psi

**WARNING - CHECK FOR PROPER OIL LEVEL BEFORE USING THIS EQUIPMENT**

Use SAE 20 (Devair part no. PR-20) non-detergent oil for ambient temperatures above 40°F

Use SAE 30 (Devair part no. PR-30) non-detergent oil for ambient temperatures above 90°F



Ref. No.	Part No.	Description	Qty	Ref. No.	Part No.	Description	Qty
1	356-9406	Silencer assembly	1	27	SS-3673	Shakeproof lockwasher internal 1/4"	1
2	356-9701	Replacement filter element	1	28	21741-194	Screw	1
3	123-417	Intake valve assembly	1	29	SS-3674	Shakeproof lockwasher internal 5/16"	2
4	123-405	Exhaust valve assembly	1	30	21741-193	Screw	2
5	123-28	Valve gasket	2	31	45856-170	Rod & cap assembly	1
6	SS-39	Head bolt	4	32	123-9700	Cylinder and crankcase	1
7	31438-124	Flywheel	1	33	SS-1	Hex head cap screw 1/4-20X1/2"	5
8	32233-122	Flywheel washer	1	34	123-11	Inspection plate	1
9	SS-3607	3/8" medium lock washer	1	35	123-14	Inspection plate gasket	1
10	SS-25	Hex head cap screw 3/8-16X1"	1	36	130-23	Ball bearing	2
14	130-111	Oil seal	1	37	DV-500	Oil drain valve	1
16	220-6	Oil pickup ring retainer	1	38	SS-1578	Key number 13 1X3/16"	1
17	NCB-303-1	Oil filler plug	1	39	225-43	Oil cup	1
18	SS-2670	O ring	1	40	123-9400	Crankshaft & oil cup assembly	1
23	123-24	Cylinder head	1	41	32541-115	Oil pickup ring	1
24	123-26	Cylinder head gasket	1	42	38281-110	End plate gasket	1
25	KK-9806	Ring Kit	1	43	37331-106	End plate	1
26	45855-131	Piston and pin assembly	1	44	SS-12	Hex head cap screw 5/16-18X3/4"	4

Note: All gaskets available in one kit under Part No. GK-9405  
 These parts should be kept on hand for service convenience

Chart 1  
**COMPRESSOR TORQUE VALUES**  
 (When SAE 20 oil is used as a lubricant)

Ref. No.	Description	In.lbs.	Ft.lbs.	Nm
44	Large end plate	144	12	16.2
16	Oil ring retainer	144	12	16.2
30	Connecting rod - crank end	228	19	25.7
28	Connecting rod - pin end	90	7.5	10.1
6	Head bolts	240	20	27.1
10	Flywheel bolts	360	30	40.6
33	Inspection cover	72	6	8.1

**NOTE:** Retorque head bolts, cylinder bolts, intercooler and end plates after first 10 hours of operation.

In.lbs. Inch Pounds  
 Ft.lbs. Foot Pounds  
 NM Newton Meters

Chart 2  
**HONING SPECIFICATIONS**

Cylinder	Std. Hone dia.	Skirt/cyl. dia. clearance
Standard cylinder	2.5000/2.5005	.0035/.0055

1. Cylinder must be within diametral tolerance at all points, out of round or taper must not exceed .0005.
2. Hone, 20 min. to 35 max. micro inches of surface roughness.
3. De-burr the sharp corners at the top and bottom of the cylinder opening with a 1/64 to 1/32 X 30 degree chamfer.

**COMPRESSOR DIMENSIONS**

