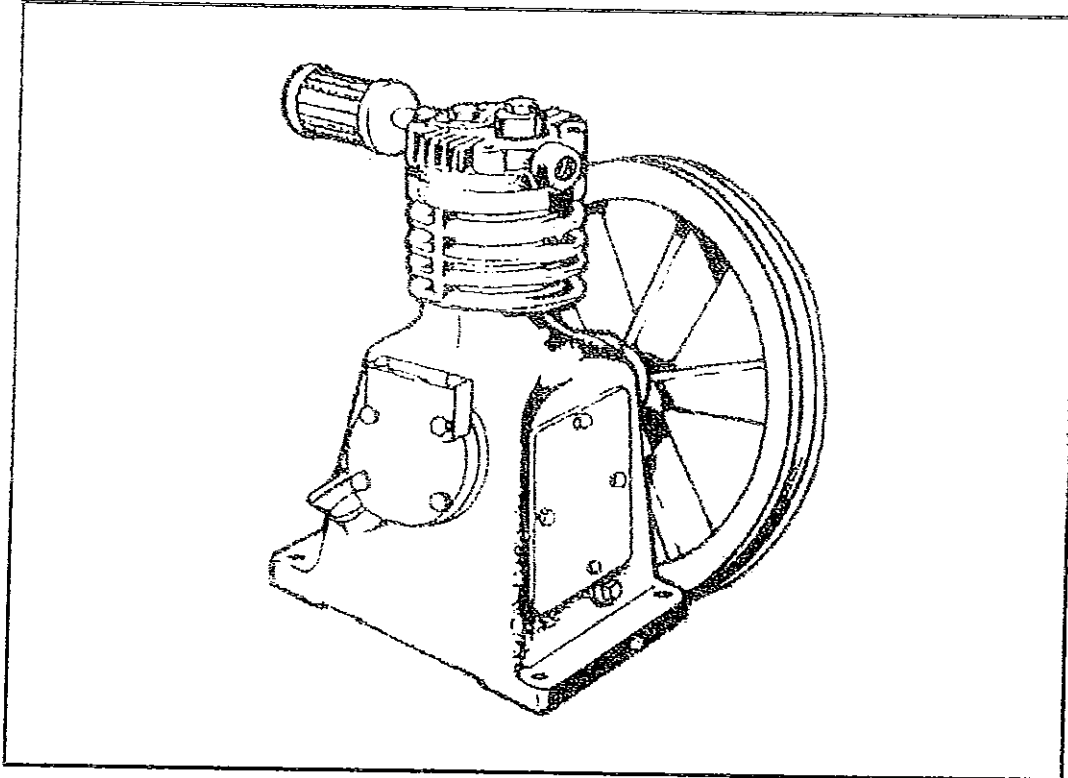




## 120 Series Compressor Pump

Note: This Pump is obsolete. Please contact your local Devair Distributor for Parts and/or a newer replacement Pump.



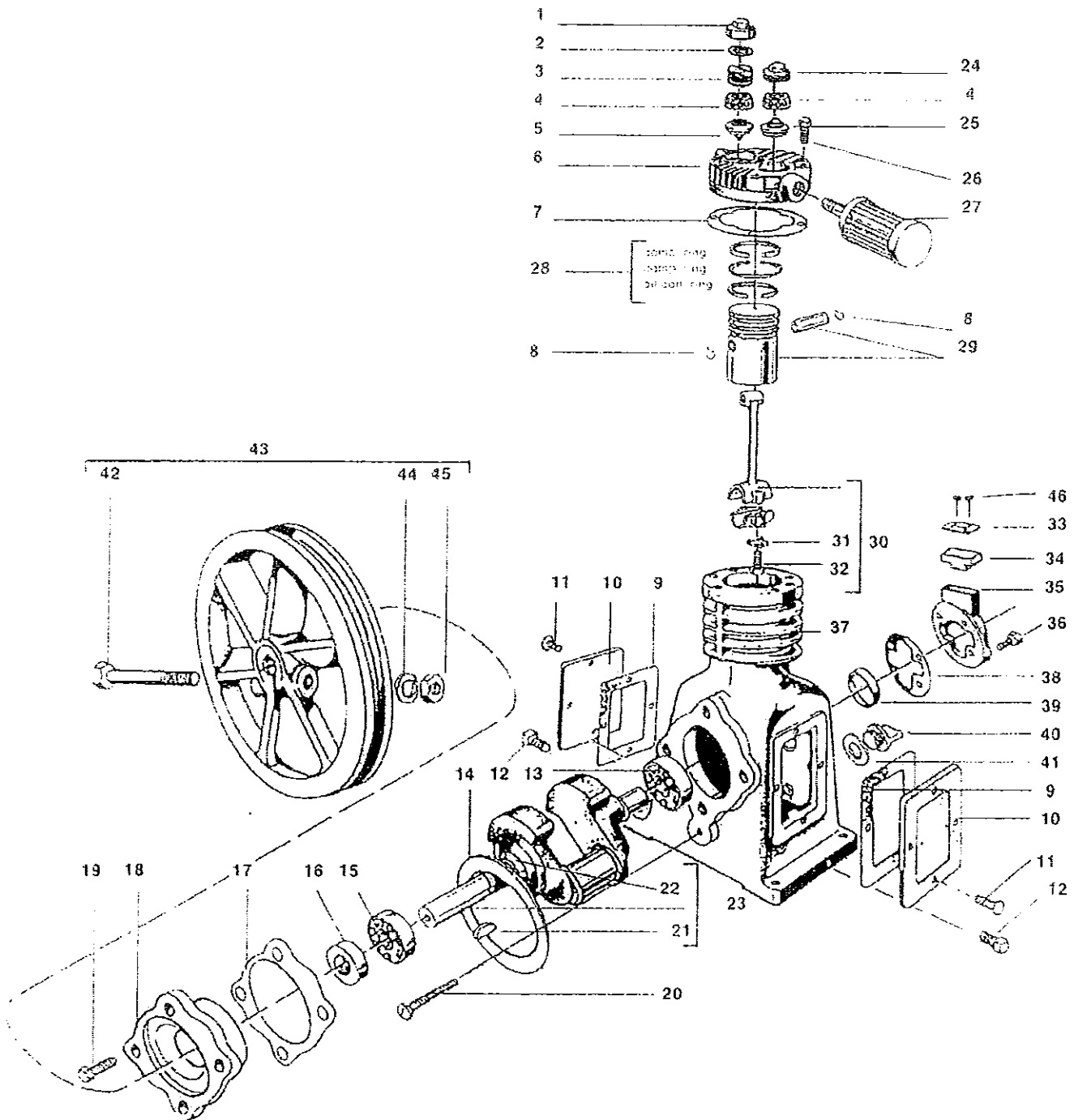
**Warning: Check for proper oil level before using this equipment.**  
Use 20 weight non-detergent oil for ambient temperatures between 40° and 90°F.  
Use 30 weight non-detergent oil for ambient temperatures above 90°F.

<b>Specifications:</b>	Crankcase Capacity:	4 Fluid Oz (0.12 litres)
	Minimum RPM:	300
	Maximum RPM:	1200
	Max. Continuous Working Press.:	150 psi

If you require assistance, contact your local Devair Distributor or Authorized Service Centre. If you wish to contact Devair directly or need to locate your closest Distributor, please reach us at :

Phone: (705) 728-5657  
Fax: (800) 561-1663

Website: [www.devair-compressors.com](http://www.devair-compressors.com)  
Email: [sales@devair.ca](mailto:sales@devair.ca)







### Compressor Torque Values

Item:	Description	In Lbs	Ft Lbs	Nm
1	Valve Cap	125	10.5	14.2
19	Large End Plate	72	6	8.1
25	Valve Plug	180	15	20.3
25	Intake Valve	36	3	4.06
27	Head Bolts	144	12	16.2
33	Connecting Rod - Crank End	120	10	13.5
37	Small End Plate	72	6	8.1
46	Flywheel Bolt	360	30	40.6

### Honing Specifications

	Std. Cylinder Hone Diameter	Piston Skirt/ Cyl Dia Clear.
Low Pressure Cylinder	2.0000	.0027
	2.0005	.0042

1. Diametral Clearance of oversized Cylinders and Pistons is the same as standard Cylinders and Pistons.
2. Cylinders must be within diametral tolerance at all points, out of round or taper must not exceed .0005.
3. Hone 20 min to 35 max micro inches of surface roughness.
4. De-burr the sharp corners at the top of the Cylinder opening with a 1/64 to 1/32 x 30° chamfer

### '120' Pump Specifications

Pump Model	HP	150 psi		100 psi		# of Cyl.	Bore	Stroke	Flywheel		Pump Dimensions (Refer to drawing)						Weight (Pounds) (Approx)
		RPM	Del'y (CFM)	RPM	Del'y (CFM)				Dia.	Groove	A	B	C	D	E	F	
120	1/2	535	0.75	535	0.87	1	2"	2"	10"	1A	7"	10.375"	N/A	6.875"	5"	2.5"	16

Note: Though the dimensions are correct, the Pump may not be exactly as shown.

